

SPAX[®]

INSERT,
HAMMER-IN,
DONE.

THE SPAX NAIL ANCHOR

For quick and easy
hammerset installation



THE SPAX NAIL ANCHOR

QUICK CONNECTION

When easy, efficient installation is required, SPAX nail anchor are always the first choice. The attachment and the substrate can be pre-drilled in one single work process. The SPAX nail anchor is then simply pushed through. Pre-assembled in a nylon anchor sleeve, the nail screw is simply hammered into the anchor sleeve. Thanks to the PZ drive, the nail screw can be removed again with a cordless screwdriver if necessary.

The nail screw is driven with little effort. Through the coordinated design, the anchor sleeve expands with maximum precision, thus guaranteeing secure fastening. This fast installation works in all solid construction materials, such as concrete, lightweight concrete, bricks, solid sand-lime bricks as well as conditionally in aerated concrete.

The advantages at a glance:

- ⊗ Time-saving push-through installation through pre-assembled nail screw in anchor sleeve.
- ⊗ PZ drive enables easy dismantling.
- ⊗ Suitable for fastening wood and drylining profiles.
- ⊗ Ideal for series assembly.
- ⊗ High holding values through optimal expanding effect.

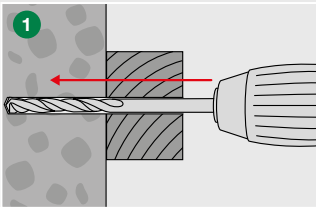


Plugged in:

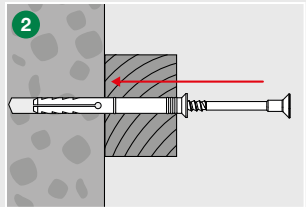
In many types of installation work, the use of nail anchor removes the need for the time-consuming transfer of drill holes from component to substrate. This applies in particular to:

- ✘ Wooden slats, squared timbers
- ✘ Plaster profiles
- ✘ Drywall profiles (on floors, ceilings, walls)
- ✘ Skirting boards
- ✘ Pipe clamps
- ✘ Cable channels
- ✘ Perforated tapes

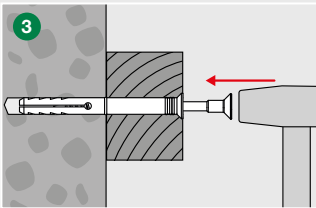
Installation and function:



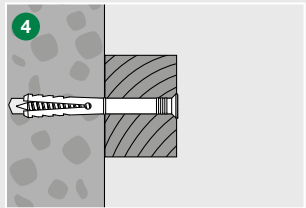
The drill hole can be drilled through the attachment in one single work process.



After cleaning the drill hole, the nail plug is inserted until the plug edge lies flush.



The nail screw is driven into the anchor sleeve with the hammer, immediately activating the expansion pressure.



Flush installation is possible in wood and can be removed again if necessary.

SPAX NAIL ANCHOR

FEATURES

HEAD

Precise drive for removal

SHANK

Reinforced shank area, reliably prevents bending during hammer-in

SPECIAL THREAD

Guarantees fast & easy installation

COUNTERSUNK COLLAR

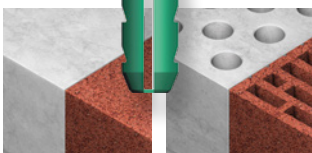
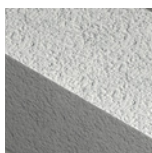
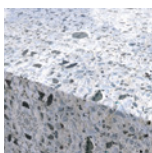
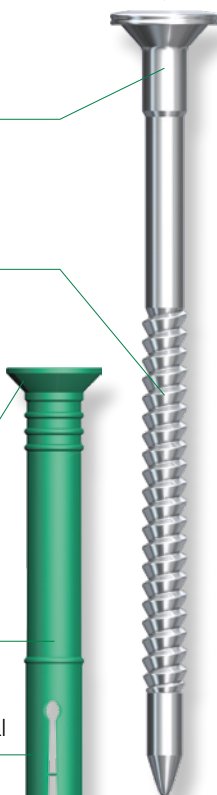
Enables flush installation of wooden structures

ANCHOR SLEEVE

High-quality nylon, stable, durable and highly resilient

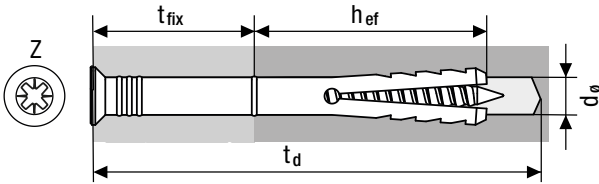
EXPANSION ELEMENT

Secure anchoring in construction material



SPAX NAIL ANCHOR

FACTS AND FIGURES



SPAX nail anchor				
Variants	6 x 40	6 x 60	8 x 80	8 x 100
Dimensions [mm]				
Drill diameter d_ø [mm]	6	6	8	8
min. drill hole depth with push-through installation t_d [mm]	50	70	90	110
min. anchoring depth h_{ef} [mm]	25	25	40	40
max. fixture thickness t_{fix} [mm]	15	35	40	60
Drive size	Z2	Z2	Z3	Z3

Subject to technical changes.

You'll also find us at:

- facebook.com/spax
- instagram.com/spax_international
- youtube.com/user/SPAXinternational

Subscribe to newsletter:

- spax.com/newsletter

SPAX International GmbH & Co. KG

ALTENLOH, BRINCK & CO - GRUPPE SEIT 1823

Kölner Straße 71 – 77 · 58256 Ennepetal · Germany
 Telefon: +49 2333 799-1967 · Fax: +49 2333 799-199
 info@spax.com · www.spax.com

Your retailer:

